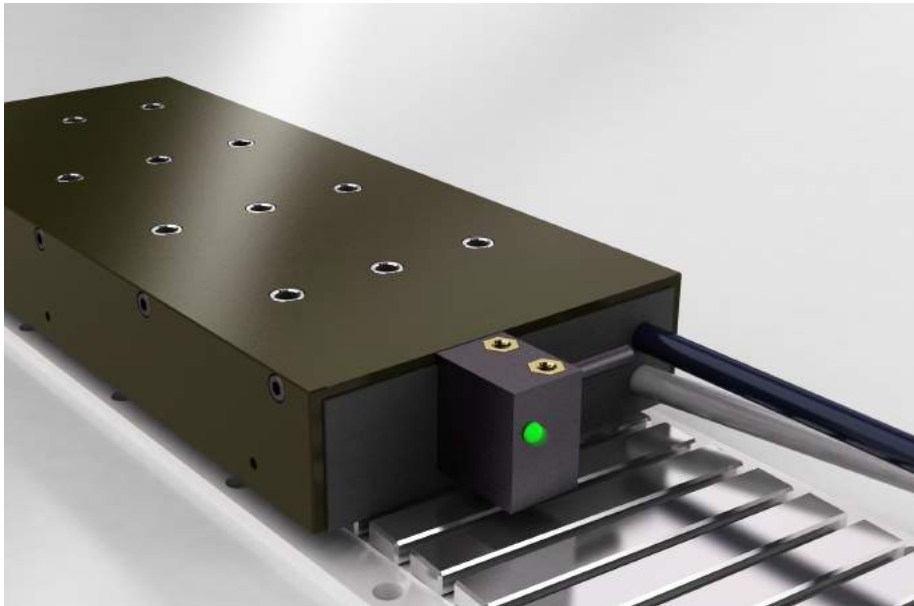


cpc Magnetic Way Encoder



Features

- No scale needed
- Very high resolution and repeatability
- Compatible with virtually any magnetic way
- Easy to install
- Status LED
- Fault output

Specifications

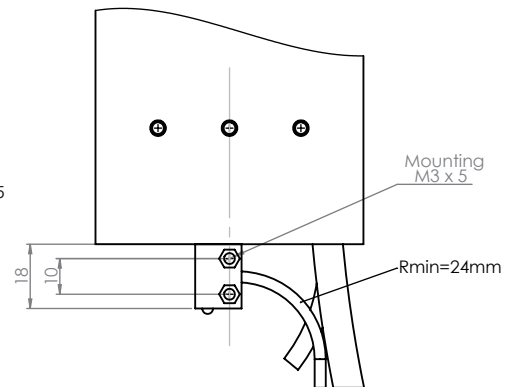
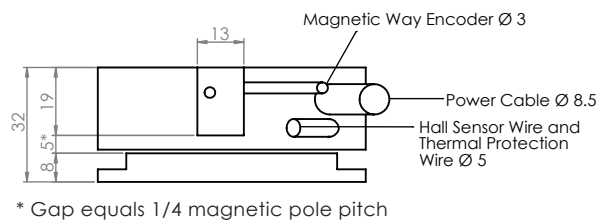
- 19 mm high, 13 mm wide, 18 mm long
- RS422 A/B incremental output
- Fault output pulling to GND during fault (max. 24 V, 600 mA)
- Travel speed 20 m/s @ 1 μm resolution
- Operates at 5 VDC ± 10 %

Wiring Information

colour	signal
blue	GND
red	5V
brown	A
green	A\
grey	B
yellow	B\
pink	RESERVED (don't connect)
white	FAULT

Assembly Dimensions

Example for MA-75:



Ordering Code

MWE	MA	75	010	FL	3000	
						Cable Length in mm
						Connector type: FL: Flying lead DM: D-sub 9, male DF: D-sub 9, female
						Resolution Code: see table attached
						Magnetic Way Width in mm
						Magnetic Way Series: MA, MB, MC
Magnetic Way Encoder						

Resolution Codes

Model	Resolution (μm)	Code
MA	1	010
	2	020
	5	050
	10	100
	20	200
MB	50	500
	2	020
	5	050
MC	10	100
	20	200
	50	500
	2	020

For more details please contact **cpc**.

cpc CHIEFTEK PRECISION Co., LTD.

HEADQUARTERS
CHIEFTEK PRECISION Co., LTD.
No.3, Dali 1st Rd., Sinshih Township,
Tainan Science Park, 741-45 Tainan, Taiwan, R.O.C
TEL:+886-6-505 5858 Http://www.chieftek.com
E-mail:service@mail.chieftek.com

CHIEFTEK PRECISION USA
4881 Murietta Street.
Chino, CA. 91710
Tel: +1-909-628-9300
Fax: +1-909-628-7171

cpc Europa GmbH
Industriepark 314,
D-78244 Gottmadingen, Germany
TEL:+49-7731-59130-38
FAX:+49-7731-59130-28

CHIEFTEK MACHINERY KUNSHAN Co., LTD.
No.1188, Hongqiao Rd, Kunshan,
Jiangsu, P.R. China
TEL:+86-512-5525 2831
FAX:+86-512-5525 2851



* cpc reserves the right to revise any information (technical details) any time without notice, for printing mistakes or any other incidental mistakes. We take no responsibility.